

# Celebrating a city's historical glory



Rahul Kadri

**Project:** Auric Hall, District Administration Building, Aurangabad  
**Architects:** IM Kadri Architects, Mumbai



The Auric Hall is designed as a landmark for the Delhi-Mumbai Industrial Corridor Development Co-operation (DMIDC) in Shendra, Aurangabad. This district administration building is planned as the face of the upcoming development in the area. Though advanced in construction technology and function, it was important that the building be planned with a character sensitive to Aurangabad's context and history.

The administration building celebrates the historical glory of old Aurangabad by drawing inspiration from traditional features found in the city's heritage architecture. A series of ceremonious arches mark the entrance to the building, reminiscent of the tomb complexes of the old city.

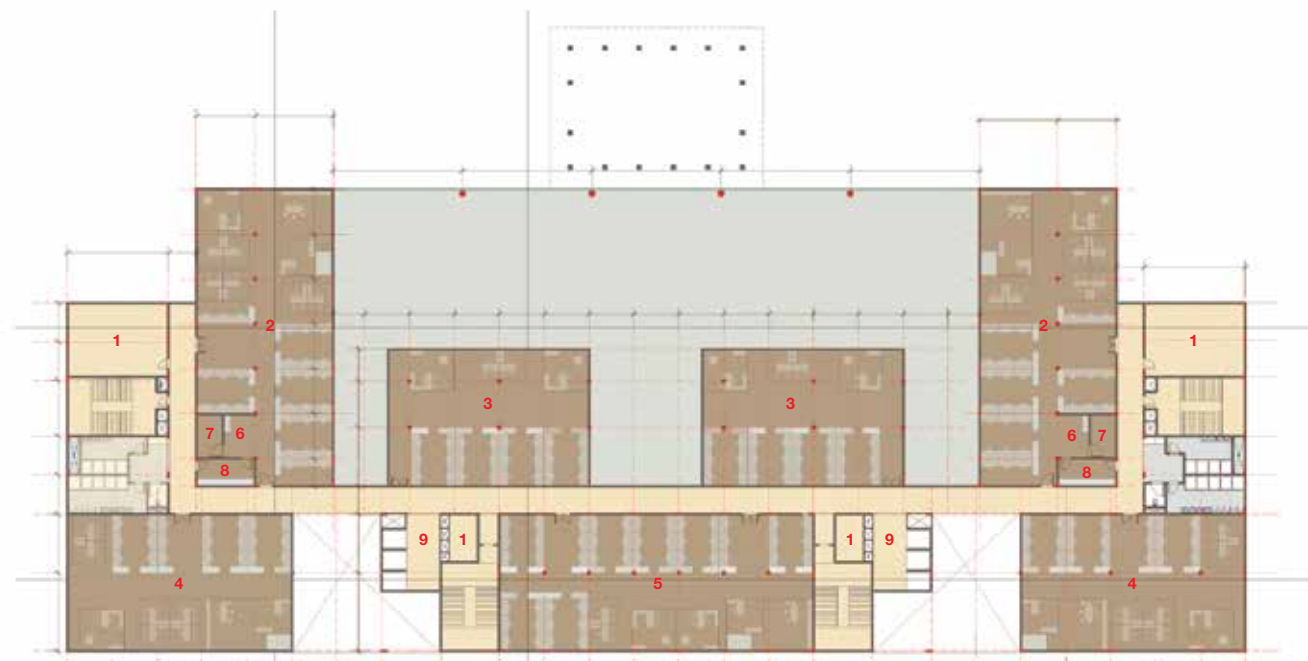
The building is wrapped with an intricate modular *jaali* derived from traditional motifs found on the historic Bibi Ka Maqbara in Aurangabad. The *jaali* screen controls the airflow and lowers the temperature of internal spaces, while also providing natural diffused sunlight. A network of three screen modules of the same motif but varying scales form the screen, break the monotony of the *jaali* façade, and help control the light and shadow for open terraces and office spaces accordingly.

To brighten up the building and bring in north light, which is ideal for workspaces, it is enclosed with a light



**SECOND FLOOR PLAN**

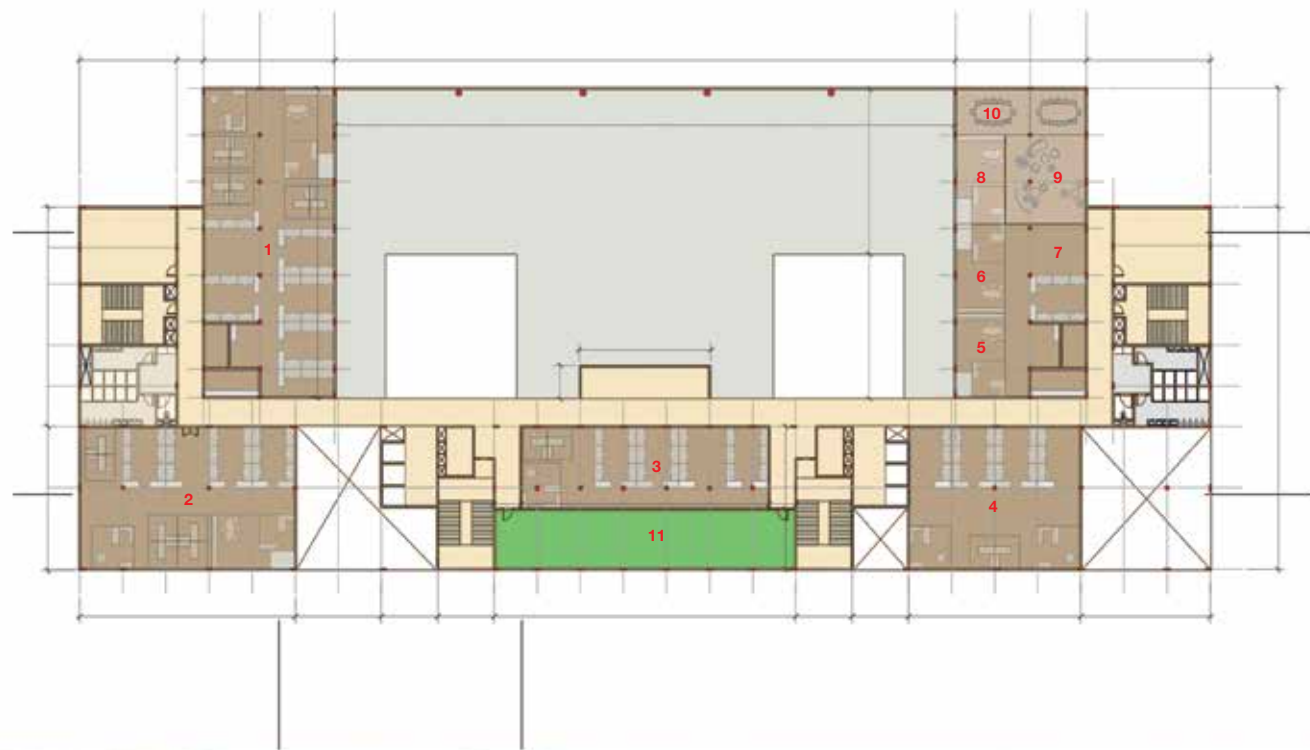
- |             |             |             |
|-------------|-------------|-------------|
| 1. OFFICE 1 | 5. OFFICE 5 | 9. UTILITY  |
| 2. OFFICE 2 | 6. OFFICE 6 | 10. PRINTER |
| 3. OFFICE 3 | 7. OFFICE 7 | 11. STORE   |
| 4. OFFICE 4 | 8. OFFICE 8 | 12. PANTRY  |



**FIRST FLOOR PLAN**

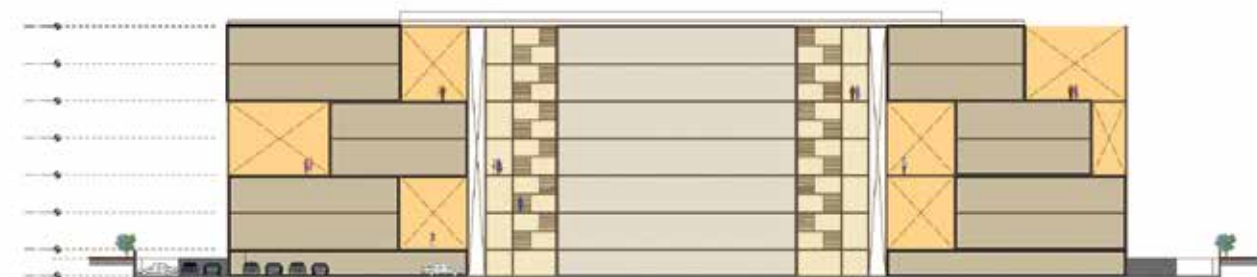
- |                  |                  |           |
|------------------|------------------|-----------|
| 1. UTILITY       | 4. OFFICE TYPE 3 | 7. STORE  |
| 2. OFFICE TYPE 1 | 5. OFFICE TYPE 4 | 8. PANTRY |
| 3. OFFICE TYPE 2 | 6. PRINTER       | 9. LOBBY  |



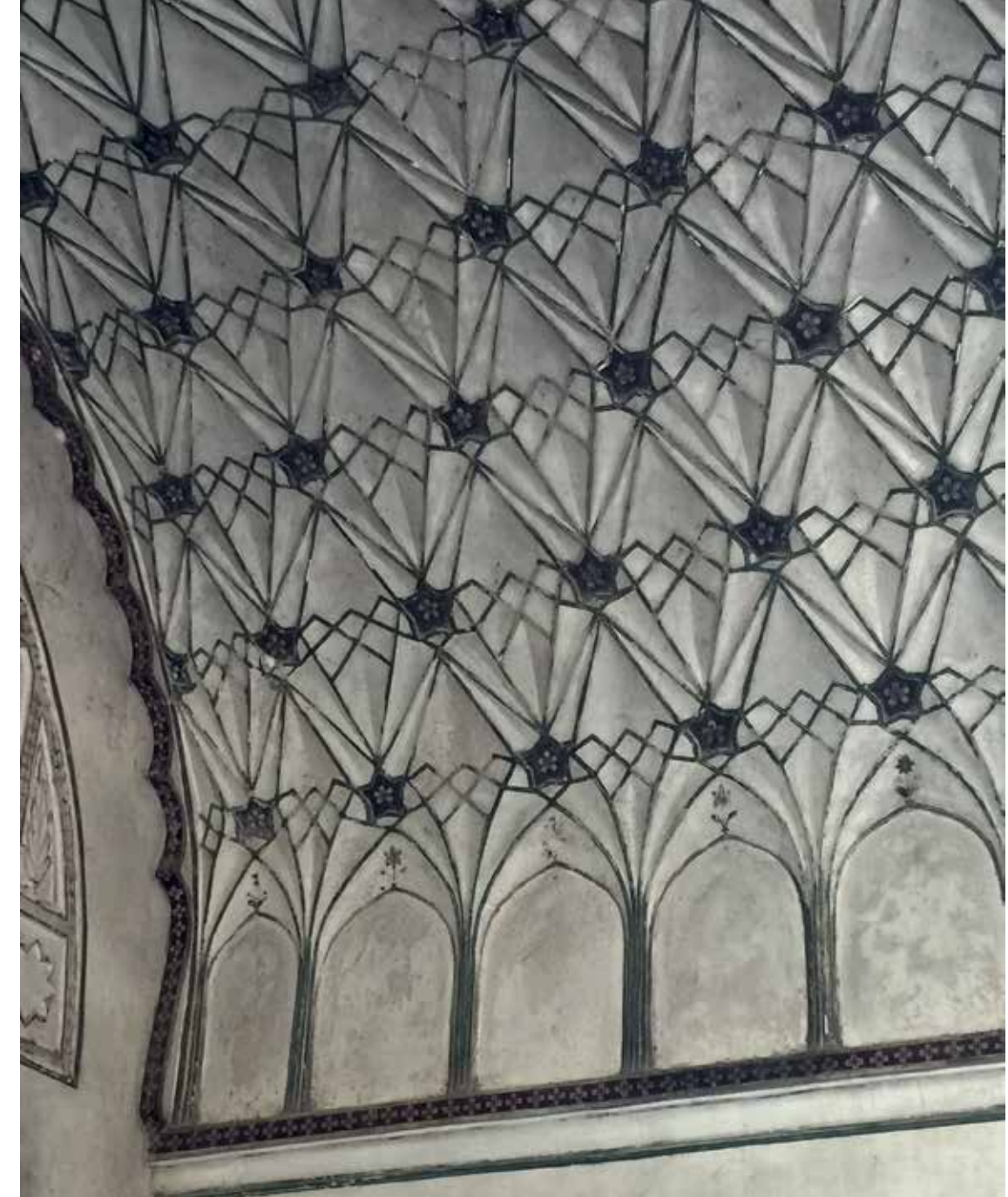


FIFTH FLOOR PLAN

- |                                |                   |                |
|--------------------------------|-------------------|----------------|
| 1. OFFICE CONSULTANTS          | 5. JMD            | 9. LOUNGE      |
| 2. OFFICE 2 - OUTSOURCED STAFF | 6. MD             | 10. CONFERENCE |
| 3. OFFICE 3 - CITY MANAGER     | 7. SUPPORT SYSTEM | 11. TERRACE    |
| 4. OFFICE 4 - AITL STAFF       | 8. CHAIRMAN       |                |



SECTION



Carving at Bibi ka Maqbara, Aurangabad

glass façade at the entrance face. Glazed with fritted glass, the screen motif is embossed on the glass panels as well, echoing the theme of the building.

The building is oriented to allow maximum glare-free light into the office spaces while simultaneously minimising heat gain. The central atrium forms the main interaction zone of the building. The enclosed office spaces open out over informal terraces that further overlook the atrium. These terraces serve as social spaces for the employees and offer a break out zone from the indoors. With terraces punctuating the atrium volume and north light filtering through the glazed façade, the atrium forms a vibrant center of activity. It further looks on to a scenic lake on site. The building is designed for an LEED platinum rating. ☒

**Factfile**

**Client:** MIDC, Aurangabad

**Built-up area:** 2.5 Lac sq ft

**Year of completion:** Ongoing – Completion 2017