





A Place to Heal

Ar. Jayakrishnan Ranjit

Rajesh Vora

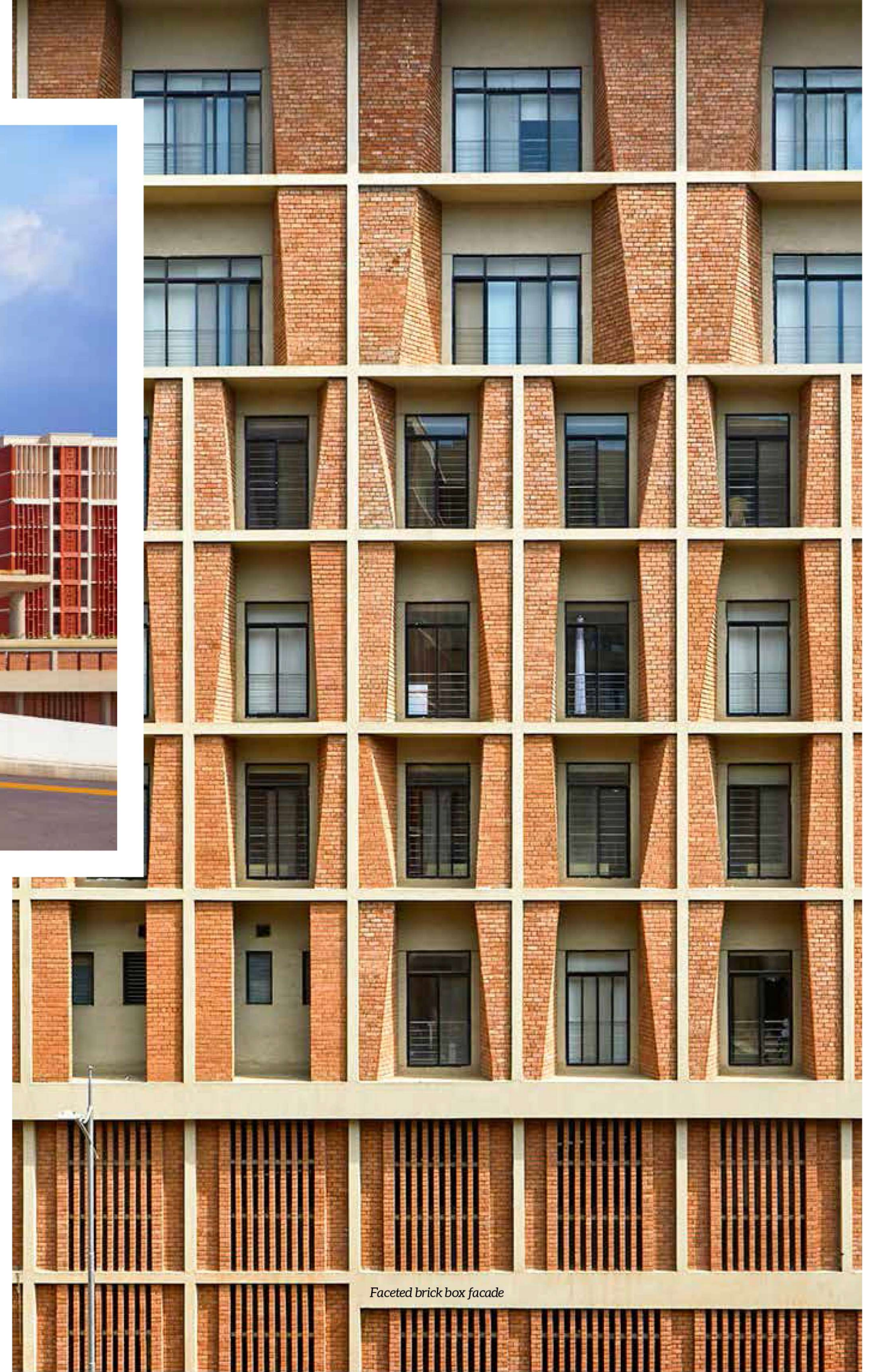
PROJECT INFO

PROJECT NAME	: SYMBIOSIS HOSPITAL & RESEARCH CENTRE
LOCATION	: LAVALE, PUNE
ARCHITECTS	: I M KADRI ARCHITECTS
PRINCIPAL ARCHITECT	: I M KADRI
STRUCTURAL (PHASE I)	: THE AXIS STRUCTURAL CONSULTANTS, PUNE
STRUCTURAL (PHASE II)	: JW CONSULTANTS LLP, PUNE
CLIENT	: SYMBIOSIS SOCIETY PUNE
MECHANICAL	: RADIANT CONSULTING ENGINEERS, NAVI MUMBAI
PROJECT YEAR	: 2019
AREA	: 4,50,000 SQ.FT.

“

The overall design of the hospital is both welcoming and peaceful. It provides a sense of grandeur along with a structure that expresses solidarity, resonates care and shelter for the patients in distress

On a flexuous terrain amidst sprawling 40-acre campus humbly sits Pune's renowned education institute Symbiosis, SUHRC. It is envisaged as a Multi-Specialty Hospital that provides excellent health care facilities and a state of the art centre, enhancing skill development. A clear concept catering to the needs of all the stakeholders, the hospital caters to the nearby population of Pune and its neighbouring areas. All the while providing Tele-Medicine services to ensure outreach services to peripheral, far-flung and access-compromised settlements. In today's context, currently, the hospital is being used for government welfare as COVID 19 hospital.



Faceted brick box facade



- 01. Symbiosis University Hospital and Research Centre
- 02. Skill Centre Cafeteria
- 03. Internal Courtyard
- 04. Open to sky Cafeteria
- 05. 12M Wide Hospital Approach Road
- 06. Hospital Dropoff Area
- 07. 12M Wide Skill Centre Approach Road
- 08. Skill Centre Dropoff Area
- 09. Service Entry To Basement Floor
- 10. Service Entry To Lowerground Floor
- 11. 18M Wide Road for Future Buildings/Residential Block
- 12. Towards Residential Block
- 13. Phase 02 Buildings



Entrance Canopy



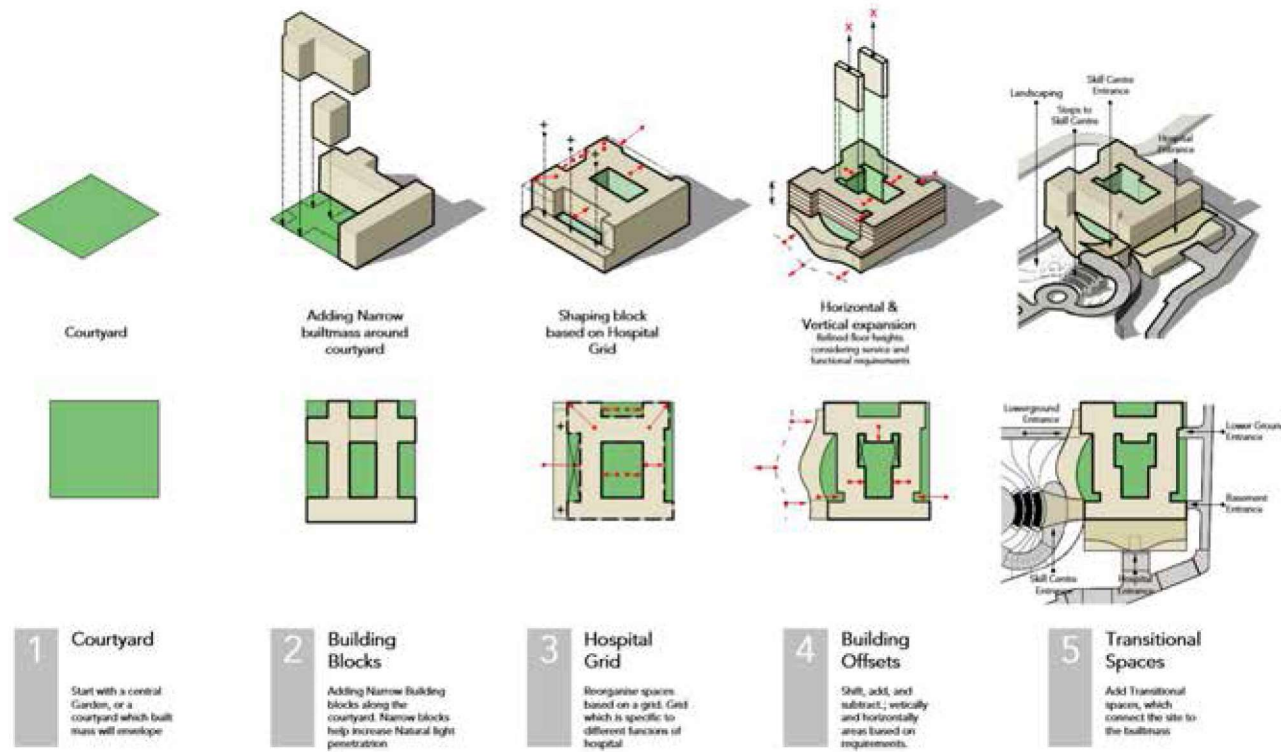
Nurse's Station

The building is strategically positioned on a slope to minimize the cut-and-fill of the hill site. A robust design curve along the contours of the land evolving into the façade of the project. The building imbibes the client brief of 'grandeur' being a key element. Two significant symbolic entrances have been designed, distinct in approach and of unique identities for the hospital and the academic block. The entry to the hospital is welcoming and peaceful. It also provides a sense of grandeur along with a structure that expresses solidarity, resonating care, and shelter for the patients in distress. A large open-to-sky courtyard separates the centre from the hospital. Separate entrances of two blocks, making them seem like two completely different entities, providing the students with different access and a space to relax and learn.

The skill centre entrance draws inspiration from the stainless-steel surgical instruments, a mammoth silver steel bird,

with wings wide, welcomes the visitor into the building. Standing bold on steel pipes, a futuristic roof scales high under the beaming bright sun in a contemporary symbolic echo. The transition between light and shade has been achieved with smaller skylights in the roof, and an expansive opening towards the patients as a biophilic space, enhancing the healing process. Two large courtyards in the building become buffer zones that help in healing patients, invoking ample light, and overlooked by wardrooms and the Out-Patient Department. The OPD is devoid of air-conditioning but allows for fresh, natural air ventilating its interiors. All departments and spaces of the hospital are designed to bring in daylight and natural ventilation through courtyards. A three-metre wide corridor in all levels abuts the central yard, which lets in natural light and ventilation, thereby reducing the AC load and consumption.

Development Diagram



The courtyards act as spaces for healing and congregation while reducing cross-infections. The terrace gardens are landscaped with flowering trees and plants, creating a soothing effect for the patients and caretakers. The main central court transforms the space around it with an abundance of plants and small trees. It brings in daylight but also makes the space aesthetically pleasing, soothing to the eye by creating a calm oasis.

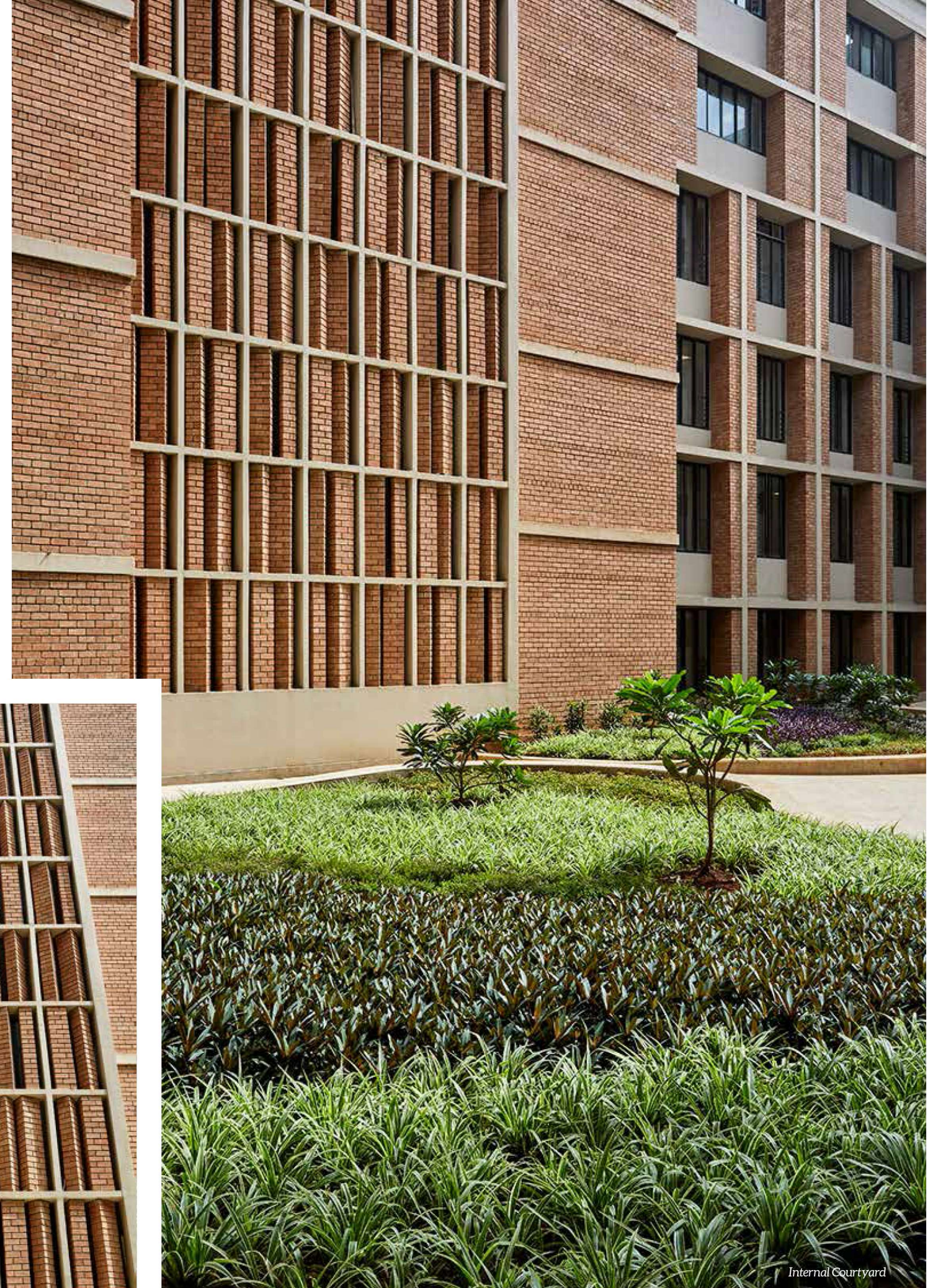
Functionally, the building comprises of four sections; three belongs to the hospital and the last one being the skill centre. Every part is a functionally- driven formal design. The three blocks, such as the general, procedure, and multi-speciality, encompasses functional ease and unfettered criss-cross movement.

Around 900 beds in the general hospital block, 600 beds for free patients and procedures are all taken care and treated by the medical college students. This block has been connected to the procedure block, with services running along one side of the corridor. At the same time, the departments are situated on the other, allowing for ease of access without causing any disturbances. Further, the procedure block is well segregated from the ward to ensure privacy to every patient, while being shared as a standard procedure block by paid and

free patients alike. This block is equipped with the latest medical technology being robotic Operation Theatres and surgical operations.

Across five levels, the hospital is developed into departments such as the OPD, casualty, radiology, MHC, etc. with easy ground access. Those that are frequented by more patients every day are planned at the ground level. The first-floor comprises of general, twin, and single bed wards, most of which overlook the garden space. The critical areas such as OT's, Pre-Op and Post Op, ICU's Cath, etc. are on the 2nd floor, making it a sterile zone. And thus segregated from other areas of the hospital.

Post-tensioned slabs are used to achieve flexibility, minimum beams, and larger spans that facilitate different room sizes and arrangements with the easy routing of ducts. Naturally compressed, sundried earthen bricks produced on-site, have been used for façade and masonry work. Smaller details have also been considered to ensure a calm and serene atmosphere. This promotes healing while encouraging research and creating spaces that are easy to use and maintenance-free. Colour coding has helped in enabling for easy identification and assortment of spaces. Critical areas such as ICU's are endowed with light colours in soothing shades to reduce anxiety.





Landscaped Courtyard



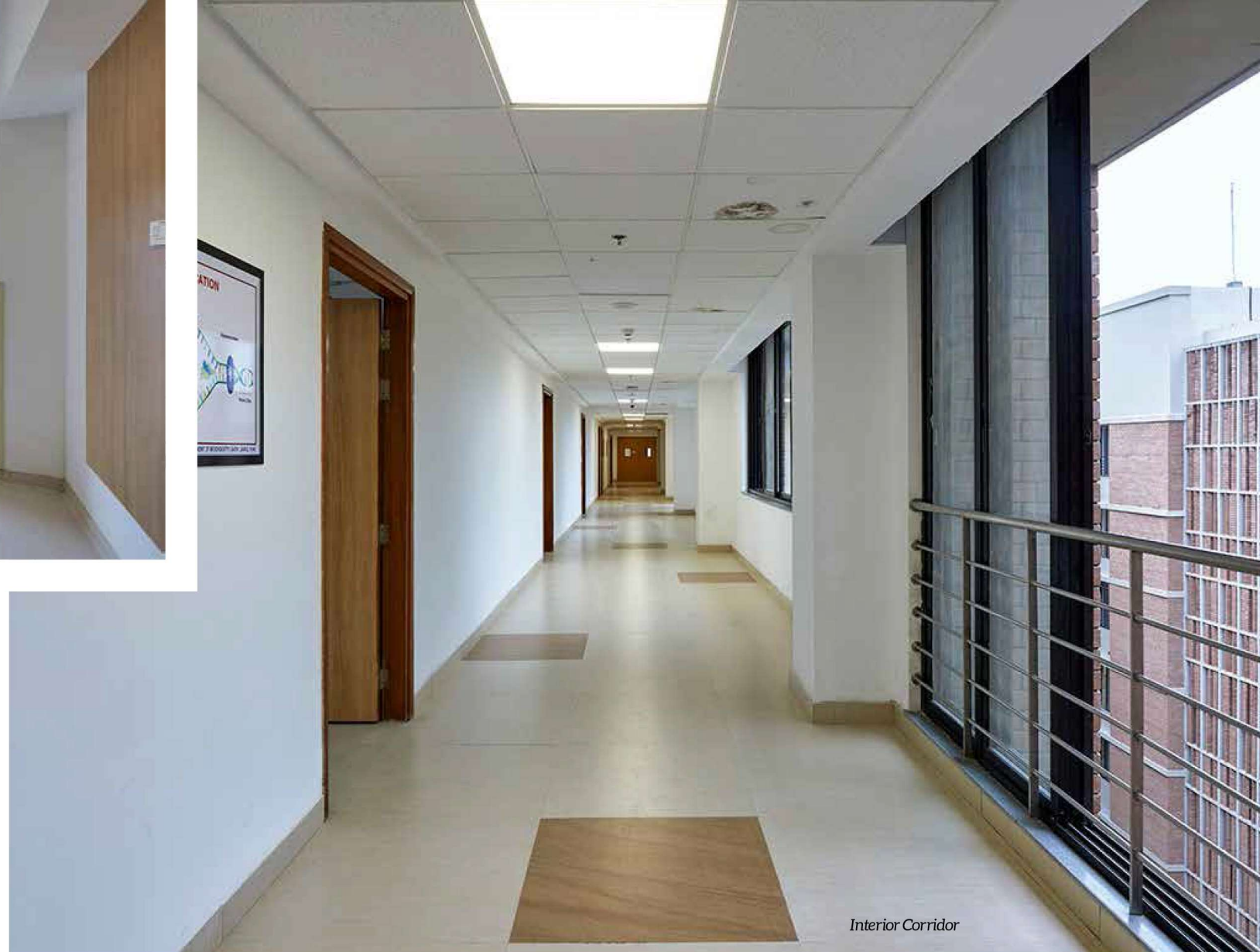
Interior Room

With careful and strategic planning the building attempts to make gestures that are grand, yet local and responsive with attention to details such as the brick-art and the exposed concrete.

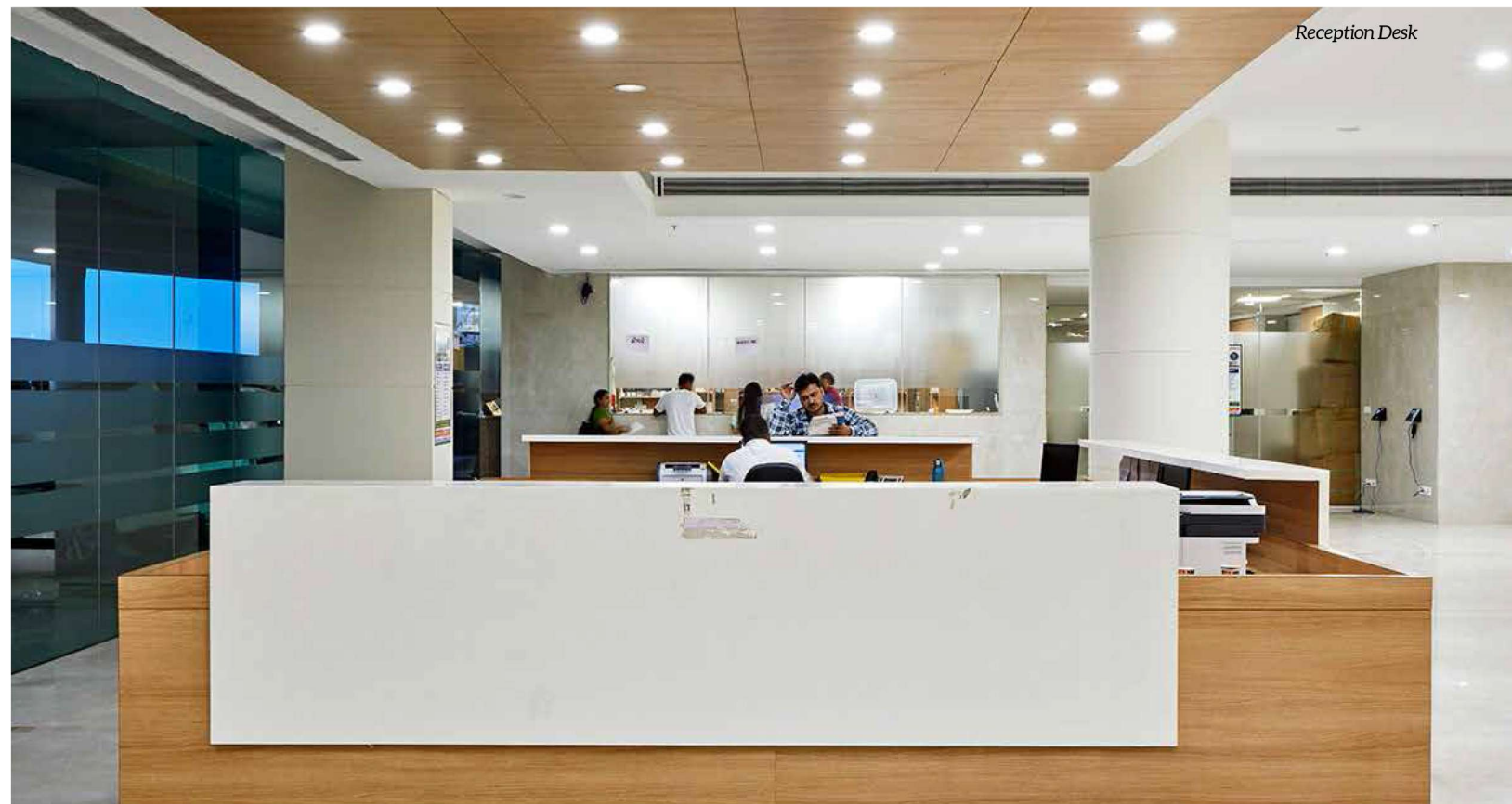
Sitting comfortably on the fringe of the hill, the inner courtyards seem like a continuation of the terrain, where the built form amalgamates with the site. From brick-art details to exposed concrete, the hospital creates a homely space for the patients. Allowing nature to be a part of the hospital and comforting the patients, the hospital creates an enriching space for recovery and rejuvenation.

Ground Floor Plan

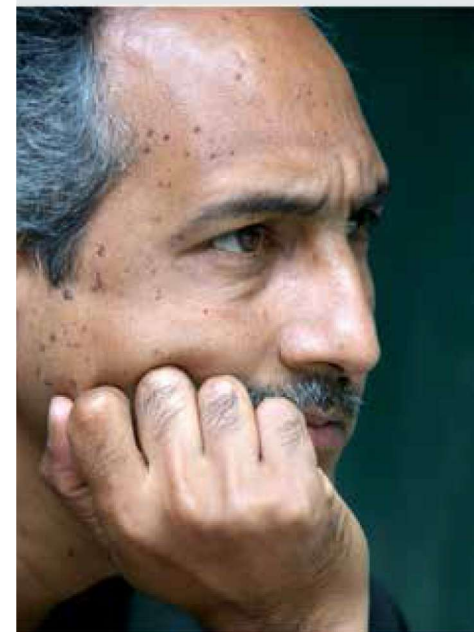
- 01. Hospital Entrance Lobby & Reception
- 01a. Hospital Drop-off
- 02. Emergency Dept.
- 02a. Emergency Drop-off
- 03. Skill Centre Entrance Lobby
- 03a. Skill Centre Drop-off
- 04. Skill Centre Cafeteria
- 05. Radiology Dept.
- 06. Out Patient Dept.
- 07. Pharmacy & Stores
- 08. Kitchen & Stores
- 09. Hospital Cafeteria
- 10. Hospital Outdoor Cafeteria
- 11. Internal Landscape Courtyard 01
- 12. Landscape Courtyard 02
- 13. Towards Hospital Drop off- Bridge Connection
- 14. Service Entry towards Lower Ground Floor
- 15. Service Entry towards Basement Floor



Interior Corridor



Reception Desk



RAHUL KADRI

I M KADRI ARCHITECTS

Founded in 1957, IMK Architects is an architecture and urban design practice headquartered in Mumbai with another office in Bengaluru. It is led by the father-son duo of I. M. Kadri and Rahul Kadri who are supported by a 35-strong multidisciplinary team of architects, designers, planners, engineers and visualisation artists. The practice's early journey is intrinsically tied to that of independent India, and more specifically, to that of the country's financial capital of Mumbai, its diverse work a reflection of changing times and imaginations as a young nation and its first metropolis navigated questions of tradition and modernity and business and politics on its way to a self-sufficient and economically-secure future. What remained constant, however, is IMK Architects' focus on exploring the potential of architecture within the paradigms of culture and civilisation to serve the needs and aspirations of the communities it serves. Social consciousness, sustainability, and robust designs have been the cornerstones of the practice. Its unique, collaborative SCRUM design process, which involves intense workshops with all project stakeholders to question briefs and prioritise requirements, ensures the effective and efficient delivery of holistic design solutions that don't just meet initial expectations but transcend them. Today, after over six decades of practice, IMK Architects draws from this rich legacy and cutting-edge research and innovation to create architecture that responds to time, place, and most importantly, people — vibrant, dynamic, healthy, socially-inclusive and ecologically-sensitive spaces where lives flourish and activities thrive.